

# Join the Project Network



Active involvement by project network members is essential to achieving GMI's mission.



## About the Project Network

The Global Methane Initiative (GMI) Project Network links a variety of organizations together to advance methane mitigation through communication, project development and implementation, and private sector involvement. Members, which include private-sector companies, energy end users, local government organizations, research programs, financial institutions, and other non-governmental organizations, provide direct access to in-depth experience and technical expertise to other Project Network Members and GMI Partner Countries for methane emission reduction. Working with the GMI Steering Committee and Sector Subcommittees, Project Network members have helped GMI leverage nearly \$600 million in investment from private-sector companies and financial institutions to recover and use methane as a renewable energy source around the world.

# Why Join?

## Engage:

- ❖ Attend GMI Subcommittee meetings and events
- ❖ Participate in technical workshops and knowledge sharing events
- ❖ Join networking events with other industry experts and representatives of non-governmental, financial and government organizations

## Take Action:

- ❖ Reduce costs, reduce waste, and generate profits through methane abatement, recovery, and use projects
- ❖ Identify and secure funding for projects
- ❖ Submit project ideas and activities to GMI Subcommittees

## Promote your Efforts:

- ❖ Highlight your expertise, technologies, or research via the GMI website, Project Network newsletter, social media and case studies
- ❖ Showcase your methane mitigation efforts via the Global Methane Challenge
- ❖ Use the GMI logo on your organization's website

## Learn from Others:

- ❖ Gain direct access to technical expertise and assistance
- ❖ Identify opportunities for projects
- ❖ Take advantage of GMI's extensive resource library
- ❖ Exchange ideas with GMI's 46 Partner Countries and more than 700 Project Network members to promote multidisciplinary and multinational collaborations
- ❖ Stay up-to-date on international methane news, reports, and technologies
- ❖ Receive information tailored to your interests with GMI's mailing list

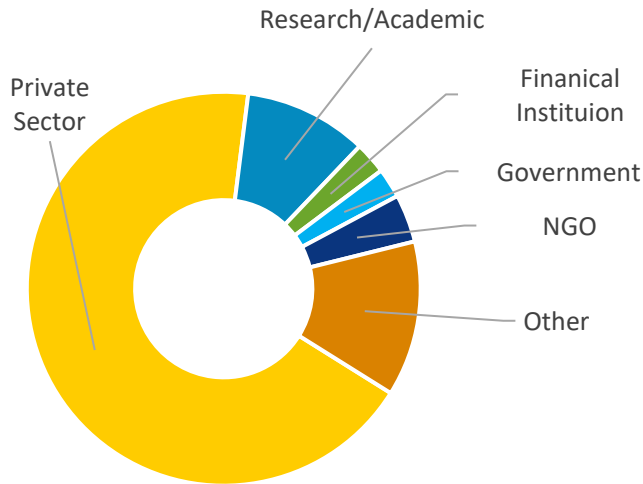
## Contribute your Expertise:

- ❖ Share technical expertise and offer assistance to other members
- ❖ Help identify solutions to methane mitigation project development barriers

# Who is in the Project Network?

## Organization Types

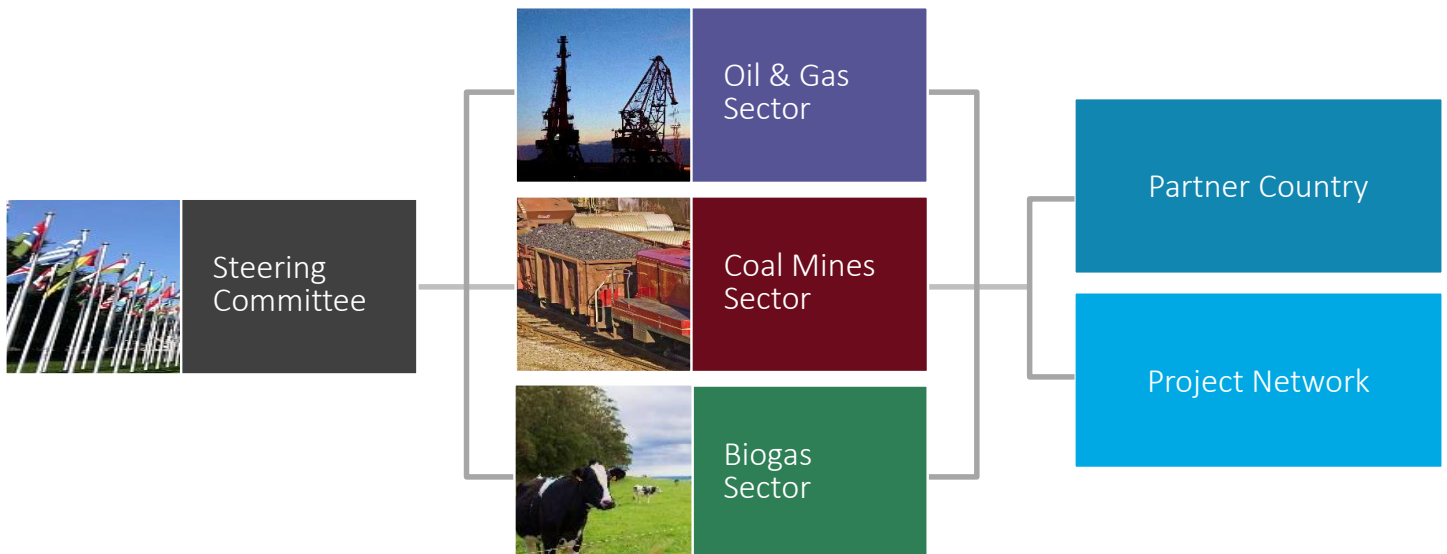
## Project Network Connections



GMI helps connect organizations with similar interests to facilitate an exchange of information. Project Network members can be searched and filtered by organization name, sector, geographic location, and organization type, and contact information is available on each Project Network member's profile. GMI promotes collaboration and communication among Project Network members.

# About the GMI

The GMI is a multilateral partnership focused on advancing cost effective, near-term methane abatement, recovery, and use projects. The GMI consists of a Steering Committee, three technical Subcommittees, 46 Partner Countries, and 700+ Project Network members that work together to promote project development and encourage active engagement from the private sector.



# Joining the Project Network

## Open to All

The Project Network is open to any private-sector entities, financial institutions, and other governmental and non-governmental organizations with an interest in methane abatement, recovery, and use projects.

## Free to Join

There is no cost to join the Project Network.

## Voluntary

As with participating in any GMI activity, joining the Project Network is completely voluntary.

## Non-Binding

Participants may opt-out of the Project Network at any time.

## Join Today!

Simply fill out a non-binding partner agreement at:

<https://www.globalmethane.org/project-network/>

You will immediately receive an email confirming your membership. Your information will be added to the GMI website in 10 business days.

## Questions?

Visit [GMI's Project Network Page](https://www.globalmethane.org/project-network/) or email us at [secretariat@globalmethane.org](mailto:secretariat@globalmethane.org)

The screenshot shows the 'Global Methane Initiative (GMI) Project Network Membership Agreement' form. It includes the GMI logo and a detailed introduction to the initiative. The form contains several sections for user input:

- Authorized Representative (name):** \_\_\_\_\_ Date: \_\_\_\_\_
- Signature:** \_\_\_\_\_
- Contact Information:**
  - Organization: \_\_\_\_\_
  - Web site: \_\_\_\_\_
  - Name: \_\_\_\_\_ Title: \_\_\_\_\_
  - Mailing Address: \_\_\_\_\_ Country: \_\_\_\_\_
  - City/State/Zip: \_\_\_\_\_
  - Email: \_\_\_\_\_
  - Telephone: \_\_\_\_\_ Fax: \_\_\_\_\_
- Please Identify Areas of Interest: (Select all that apply)**
  - Agriculture (Animal Waste Management)
  - Oil and Gas Systems
  - Coal Mines
  - Municipal Wastewater
  - Landfills
  - Other \_\_\_\_\_
- Project Network Membership Responsibilities:**
  - Support the goal of reducing global methane emissions and advancing the abatement, recovery and use of methane as a valuable clean energy source.
  - Actively participate in GMI-sponsored workshops and events for the purpose of facilitating project development and information exchange.
  - Work with Partner governments and other members of the Project Network in identifying and undertaking cooperative activities aimed at overcoming challenges to cost-effective methane abatement, recovery, and use.
  - Take actions that support project development, such as emission inventories, feasibility studies, technology demonstration, technology deployment, and project finance.
  - Communicate your participation and report the results of your activities to other members.

At the bottom, it states: 'Please email completed form to [asp@globalmethane.org](mailto:asp@globalmethane.org) or Register online at: <http://globalmethane.org/projectnetwork/option.aspx>'