



Global Methane Initiative (GMI) Administrative Support Group (Secretariat) Update

Monica Shimamura
Director, GMI Administrative Support Group
27 September 2017



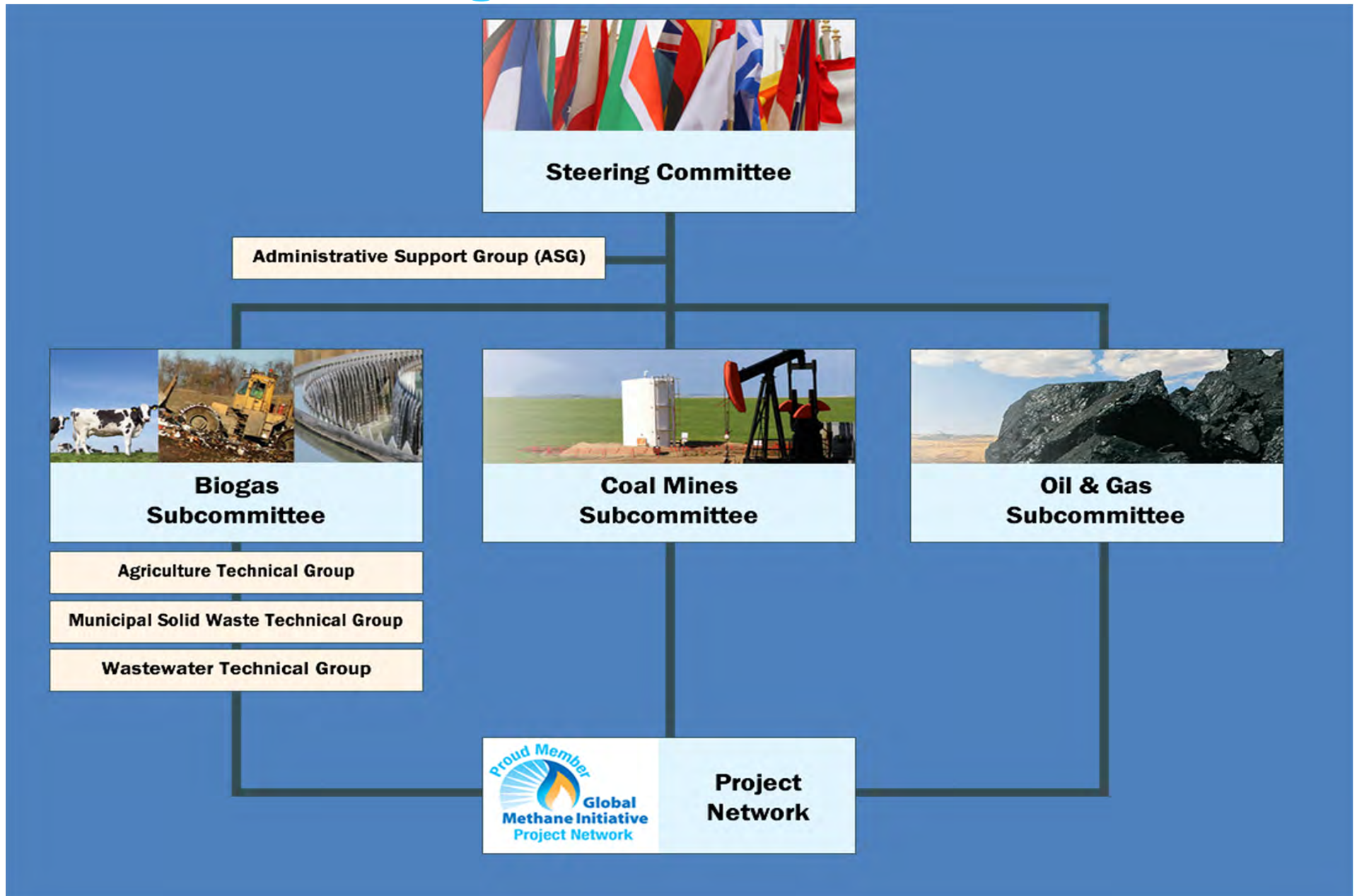
Outline

- GMI Charter – First year
- Steering Committee Charges
- 2018 Global Methane Forum
- Website and Communication
- Collaboration with CCAC and UNECE

Activities Under the New GMI Charter

- Charter renewed for 5 years to April 2021
- Biogas Subcommittee formalized
- Emphasis on information sharing and policy development rather than site-specific projects
- Continue collaboration with:
 - United Nations Economic Commission for Europe (UNECE)
 - Climate and Clean Air Coalition (CCAC)
- Canada and Mexico are new Steering Committee Co-Chairs

GMI Organizational Structure



Charges to Subcommittees

Virtual Steering Committee meeting held
June 2017

- Begin planning for 2018 Global Methane Forum
 - Organize Subcommittee Meeting
 - Work jointly with CCAC and UNECE

2018 Global Methane Forum

- Hosted jointly by GMI, CCAC and Canada
- Audience: partner country delegates, private sector, NGOs, academia



2018 Global Methane Forum: Draft Agenda

| | |
|--------------------------------|----------------------------------------------------------------------|
| Monday, April 16, 2018 | |
| AM | Site tour of organics recycling facility (3 hrs) |
| PM | Site tour(s) of wastewater treatment plant |
| Tuesday, April 17, 2018 | |
| AM | Plenary |
| | GMI and CCAC Joint sector-specific technical sessions (2 hrs) |
| PM | GMI Subcommittee meetings and technical sessions (3 hrs) |
| Wednesday April 18 | |
| AM | Key Note Opening |
| | Plenary – Methane Science |
| PM | Update on latest SLCP Science (CCAC lead, open to all) |
| Thursday April 19 | |
| All day | CCAC Working Group Meeting (Open to GMI) |
| Friday April 20 | |
| All day | CCAC Working Group Meeting (CCAC Partners Only) |

Registration will open soon!



www.globalmethane.org

- 2016 - gathered usability feedback
- Launched updated website 2017
 - User and mobile friendly
 - Enhanced search functions
- Coming soon
 - knowledge management platform
 - Detailed data maps

GMI Collaboration with CCAC and UNECE

GMI and UNECE

- Opened Center for Excellence on Coalmine Methane in 2017 – Poland and China
- Coalmine Methane 2017 best practice workshops – India, Kazakhstan, China, and Poland
- Meeting jointly: Oil and Gas Subcommittee and Group of Experts on Gas

GMI and CCAC

- Global Methane Forum
 - Joint methane technical sessions
 - Joint key note and plenary session
 - Joint Science and Policy Dialogue

Thank you!

Questions?

Monica Shimamura
Director, Administrative Support Group
Global Methane Initiative
Shimamura.monica@epa.gov

