



Methane emission reduction in agricultural sector: achievements and policies

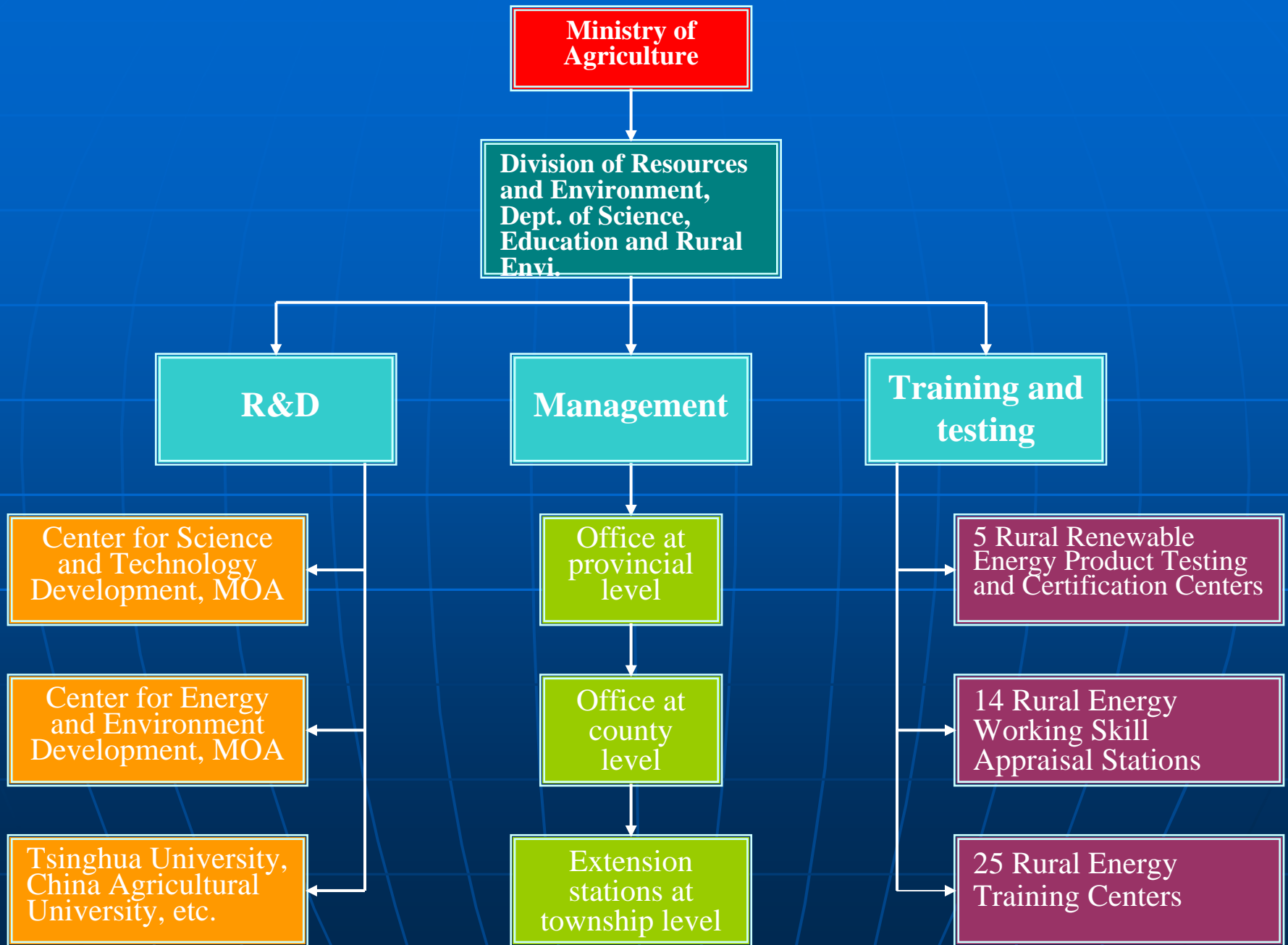
Kou Jianping

Sun Yufang

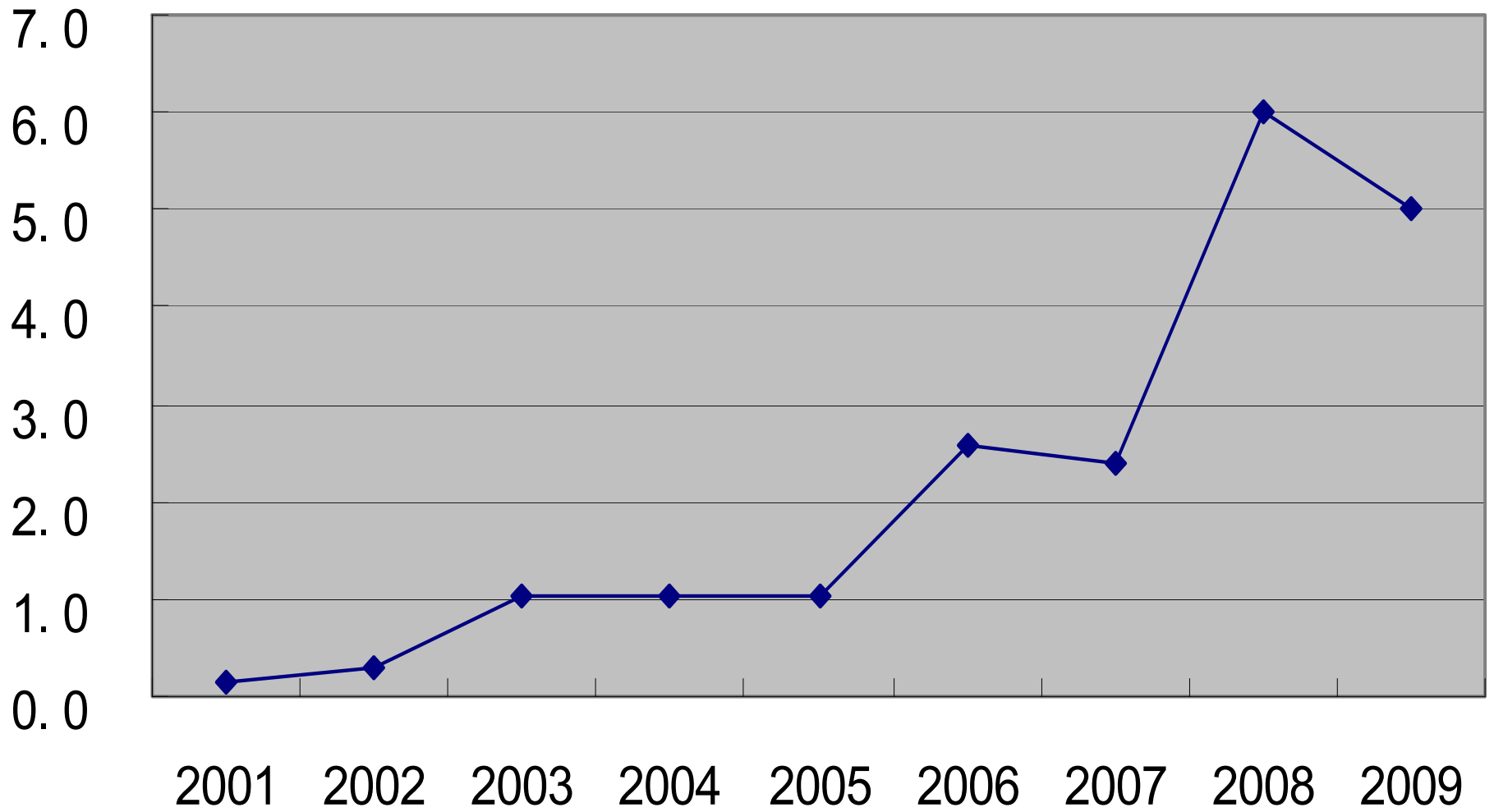
Ministry of Agriculture, P.R.China

March 4, New Delhi, India

Management Structure



Central government investment in biogas (Billion RMB Yuan)



Central government subsidies

For household biogas digesters: 1500 RMB Yuan for each household in Northeast China where heat preservation measures are necessary in cold winter and for underdeveloped western China households; 1200 Yuan for household in central China and 1000 Yuan for household in Eastern China.

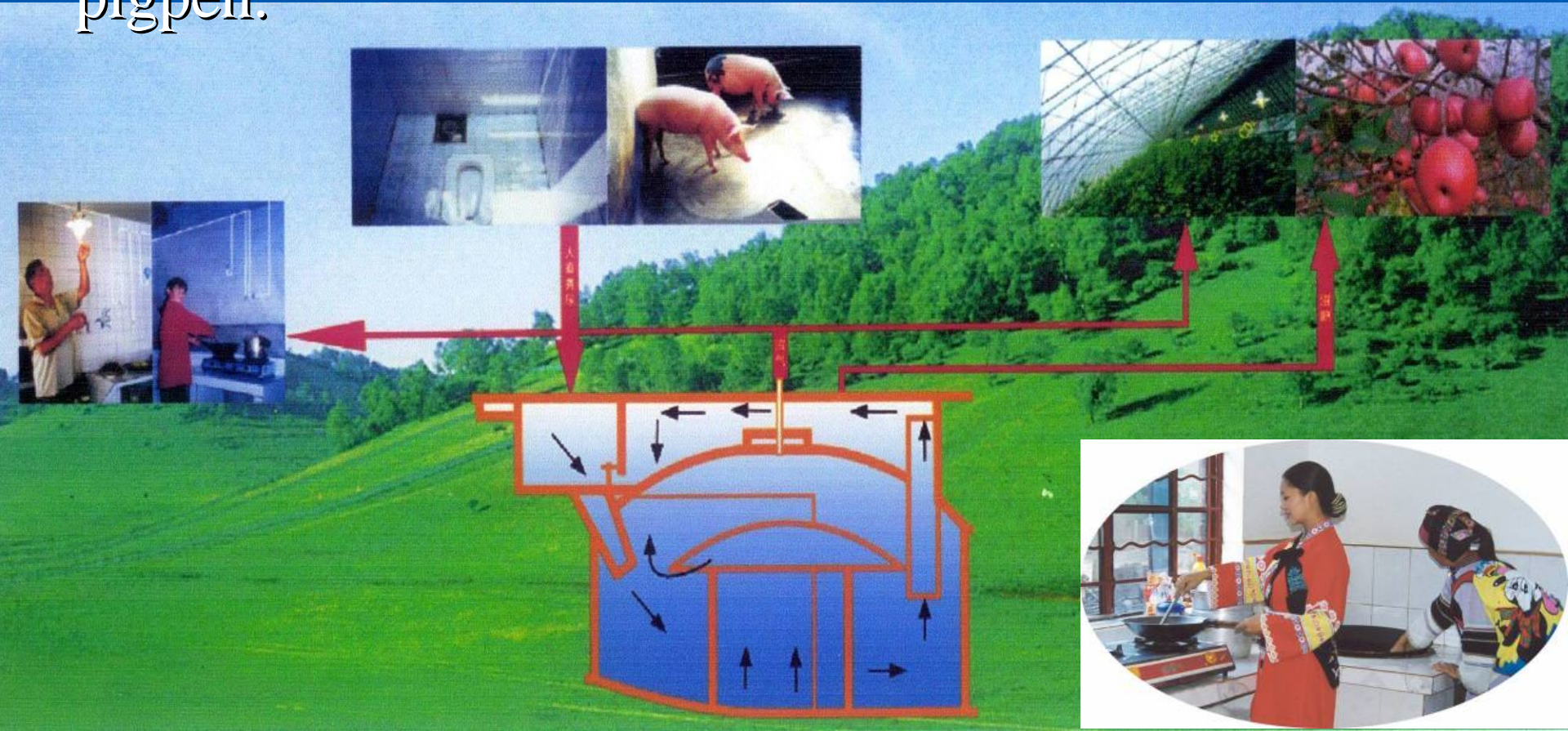
Central government subsidies

For large and medium biogas installations on husbandry farms: 45% total investment is subsidized for each installation in Western China, with an upper limit 2 million Yuan for each one; 35% for each installation in Central China and upper limit 1.5 million Yuan; 25% for each installation in Eastern China and upper limit 1 million Yuan.

For technical service stations: 25000 Yuan for each station in Eastern China, 35000 Yuan for each in Central part and 45000 Yuan for each in Western part.

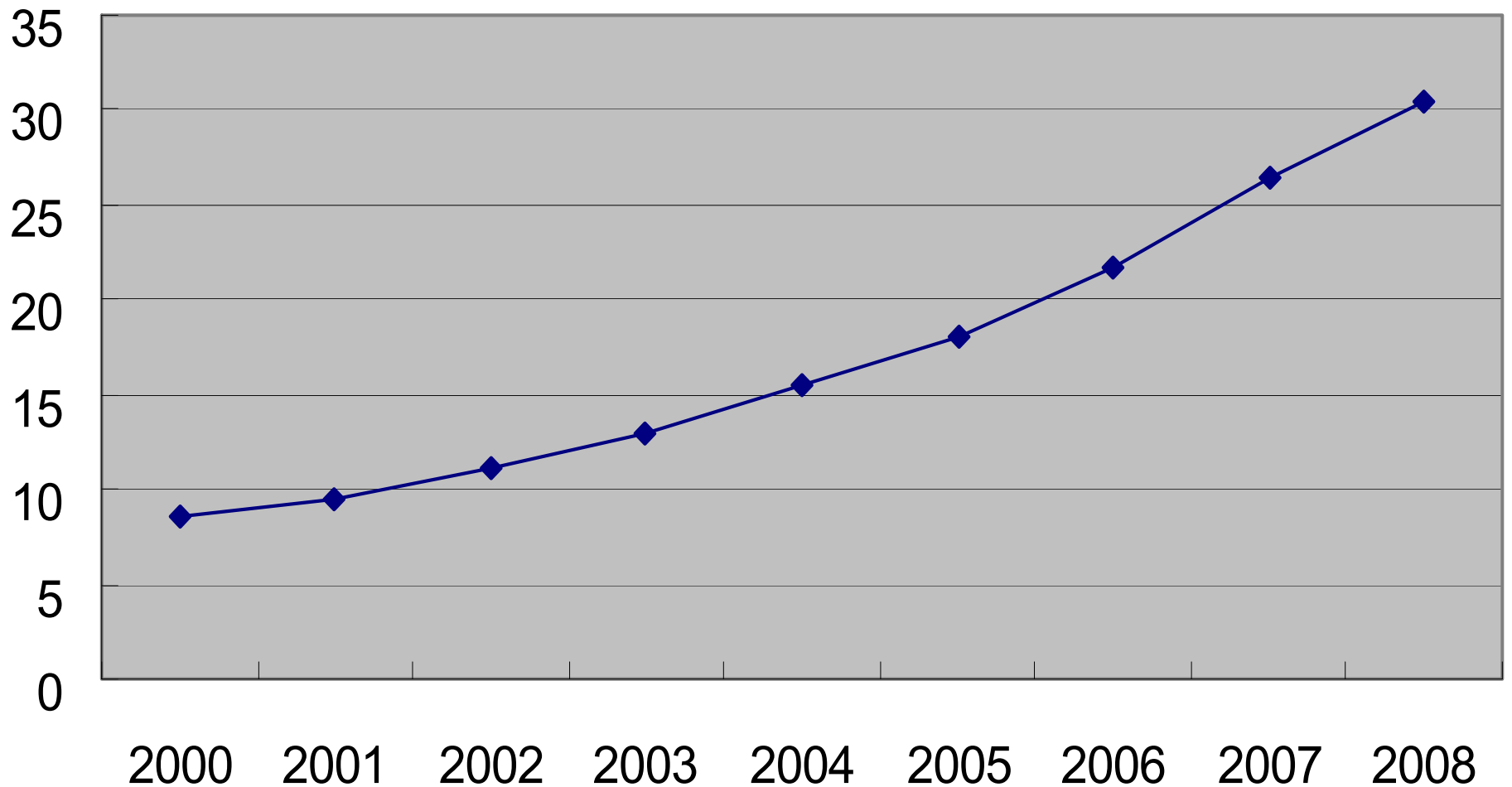
Household biogas

Household biogas development in rural areas is based on one-digester plus three renovations, involving a digester and renovations of kitchen, washing room and pigpen.



Rural Household Biogas development

(Million Households)



Large and medium biogas installations on husbandry farms

By the end of 2008, there are 39510 biogas installations on husbandry farms, producing 520 million m³ biogas, including 2761 large installations and 12864 medium scale installations.



Technical service network

To provide service for biogas users, government subsidizes the development of technical service stations, each of them been subsidized to provide input and output equipment, testing and maintenance equipment.



Technical service

The county-level service stations have been established in 50 counties and village-level stations been established in 60000 villages. These pilot stations have been engaged in digester construction, maintenance service and supply of pipelines and parts.



GHG emission reduction effects

By the end of 2008, both the household digesters and the installations on husbandry farms produce biogas 12.2 billion m³, reducing CO₂ emission 385 million tons and contributing to the farmers' income increase of 15 billion Yuan.

CDM projects

13 CDM projects have been accepted in China, with an annual CO₂ reduction 0.9 million tons. 3 projects have been registered and their CO₂ emission reduction is 0.2 million tons each year.



Thanks

Tel: 86 10 59192987

Fax: 86 10 59193031

Email: kjszyhjc@agri.gov.cn